

# SSB Coils

[RoHS Compliant]



●SSB15 Series (SSB 15-□□□)

Model	Inductance L (μH) at 10 kHz, 1 mA	Rdc (mΩ) max	Rated current (A) ΔT=20°C	Current (Ref.) (A)	
				ΔT=40°C	L change rate 10%
SSB15-1R0	1.0±20%	10	10.00	14.00	24.50
SSB15-1R5	1.5±20%	10	8.80	12.30	19.60
SSB15-2R2	2.2±20%	20	6.40	8.90	14.00
SSB15-3R3	3.3±20%	20	5.90	8.20	12.20
SSB15-4R7	4.7±20%	20	5.00	7.00	10.80
SSB15-6R8	6.8±20%	30	4.30	6.00	8.90
SSB15-100	10±20%	40	3.40	4.70	7.00
SSB15-150	15±20%	60	2.70	3.70	5.70
SSB15-220	22±20%	80	2.20	3.00	4.90
SSB15-330	33±20%	110	1.80	2.50	4.00
SSB15-470	47±10%	180	1.40	1.90	3.20
SSB15-680	68±10%	220	1.20	1.60	2.70
SSB15-101	100±10%	320	1.00	1.40	2.20
SSB15-151	150±10%	430	0.87	1.20	1.80
SSB15-221	220±10%	600	0.71	0.99	1.40
SSB15-331	330±10%	960	0.55	0.77	1.20
SSB15-471	470±10%	1400	0.45	0.63	1.00
SSB15-681	680±10%	2000	0.36	0.50	0.85
SSB15-102	1000±10%	3000	0.29	0.40	0.71

●SSB14 Series (SSB 14-□□□)

Model	Inductance L (μH) at 10 kHz, 1 mA	Rdc (mΩ) max	Rated current (A) ΔT=20°C	Current (Ref.) (A)	
				ΔT=40°C	L change rate 10%
SSB14-1R0	1.0±20%	10	7.00	9.80	17.50
SSB14-1R5	1.5±20%	20	6.10	8.50	14.00
SSB14-2R2	2.2±20%	20	5.10	7.10	11.60
SSB14-3R3	3.3±20%	30	4.10	5.70	10.00
SSB14-4R7	4.7±20%	30	3.80	5.30	8.70
SSB14-6R8	6.8±20%	40	3.00	4.20	7.00
SSB14-100	10±20%	60	2.40	3.30	5.80
SSB14-150	15±20%	100	1.80	2.50	4.60
SSB14-220	22±20%	120	1.60	2.20	3.80
SSB14-330	33±20%	170	1.30	1.80	3.10
SSB14-470	47±10%	210	1.10	1.50	2.60
SSB14-680	68±10%	300	0.97	1.30	2.10
SSB14-101	100±10%	480	0.75	1.00	1.80
SSB14-151	150±10%	710	0.60	0.84	1.40
SSB14-221	220±10%	1000	0.51	0.71	1.20
SSB14-331	330±10%	1500	0.40	0.56	1.00
SSB14-471	470±10%	2300	0.32	0.44	0.86
SSB14-681	680±10%	3400	0.26	0.36	0.72
SSB14-102	1000±10%	4400	0.23	0.32	0.58



- All specifications in this catalog and production status of products are subject to change without notice. Prior to the purchase, please contact NEC TOKIN for updated product data.
- Please request for a specification sheet for detailed product data prior to the purchase.
- Before using the product in this catalog, please read "Precautions" and other safety precautions listed in the printed version catalog.

## ●SSB84 Series (SSB 84-□□□)

Model	Inductance L (μH) at 10 kHz, 1mA	Rdc (mΩ) max	Rated current (A)		Current (Ref.) (A)	
			ΔT=20°C	ΔT=40°C	L change rate 10%	
SSB84-1R0	1.0±20%	40	2.30	3.20	10.00	
SSB84-1R5	1.5±20%	40	2.20	3.00	8.30	
SSB84-2R2	2.2±20%	50	2.00	2.80	7.10	
SSB84-3R3	3.3±20%	50	1.90	2.60	6.20	
SSB84-4R7	4.7±20%	60	1.70	2.30	5.00	
SSB84-6R8	6.8±20%	80	1.60	2.20	4.10	
SSB84-100	10±20%	100	1.40	1.90	3.30	
SSB84-150	15±20%	110	1.20	1.60	2.70	
SSB84-220	22±20%	160	1.20	1.60	2.10	
SSB84-330	33±20%	200	1.00	1.40	1.70	
SSB84-470	47±10%	300	0.75	1.00	1.50	
SSB84-680	68±10%	410	0.70	0.98	1.20	
SSB84-101	100±10%	570	0.60	0.84	1.10	
SSB84-151	150±10%	1100	0.40	0.56	0.96	
SSB84-221	220±10%	1450	0.35	0.49	0.77	
SSB84-331	330±10%	2000	0.30	0.42	0.62	
SSB84-471	470±10%	3300	0.20	0.28	0.55	
SSB84-681	680±10%	4100	0.20	0.28	0.45	
SSB84-102	1000±10%	5600	0.18	0.25	0.35	

## ●SSB64 Series (SSB 64-□□□)

Model	Inductance L (μH) at 10 kHz, 1mA	Rdc (mΩ) max	Rated current (A)		Current (Ref.) (A)	
			ΔT=20°C	ΔT=40°C	L change rate 10%	
SSB64-1R0	1.0±20%	40	1.70	2.30	11.60	
SSB64-1R5	1.5±20%	50	1.50	2.10	10.00	
SSB64-2R2	2.2±20%	60	1.50	2.10	7.70	
SSB64-3R3	3.3±20%	70	1.50	2.10	6.30	
SSB64-4R7	4.7±20%	80	1.40	1.90	5.30	
SSB64-6R8	6.8±20%	100	1.30	1.80	4.30	
SSB64-100	10±20%	120	1.20	1.60	3.60	
SSB64-150	15±20%	150	1.00	1.40	2.90	
SSB64-220	22±20%	240	0.80	1.10	2.40	
SSB64-330	33±20%	290	0.70	0.98	2.00	
SSB64-470	47±10%	420	0.55	0.77	1.60	
SSB64-680	68±10%	830	0.40	0.56	1.40	
SSB64-101	100±10%	1000	0.35	0.49	1.00	
SSB64-151	150±10%	1100	0.30	0.42	0.86	
SSB64-221	220±10%	2400	0.30	0.42	0.71	
SSB64-331	330±10%	3150	0.20	0.28	0.59	
SSB64-471	470±10%	4000	0.19	0.26	0.49	
SSB64-681	680±10%	6600	0.15	0.21	0.41	
SSB64-102	1000±10%	8400	0.14	0.19	0.34	

## ●SSB44 Series (SSB 44-□□□)

Model	Inductance L (μH) at 10 kHz, 1mA	Rdc (mΩ) max	Rated current (A)		Current (Ref.) (A)	
			ΔT=20°C	ΔT=40°C	L change rate 10%	
SSB44-1R0	1.0±20%	70	1.90	2.60	6.70	
SSB44-1R5	1.5±20%	70	1.90	2.60	5.80	
SSB44-2R2	2.2±20%	100	1.60	2.20	4.70	
SSB44-3R3	3.3±20%	100	1.50	2.10	3.90	
SSB44-4R7	4.7±20%	100	1.30	1.80	3.10	
SSB44-6R8	6.8±20%	130	1.20	1.60	2.60	
SSB44-100	10±20%	170	0.85	1.10	2.10	
SSB44-150	15±20%	270	0.75	1.00	1.70	
SSB44-220	22±20%	370	0.65	0.91	1.30	
SSB44-330	33±20%	550	0.45	0.63	1.10	
SSB44-470	47±10%	820	0.40	0.56	0.97	
SSB44-680	68±10%	920	0.35	0.49	0.83	
SSB44-101	100±10%	1600	0.25	0.35	0.71	
SSB44-151	150±10%	1900	0.22	0.30	0.57	
SSB44-221	220±10%	3000	0.20	0.28	0.46	
SSB44-331	330±10%	4900	0.15	0.21	0.38	
SSB44-471	470±10%	7500	0.12	0.16	0.31	
SSB44-681	680±10%	8300	0.10	0.14	0.29	

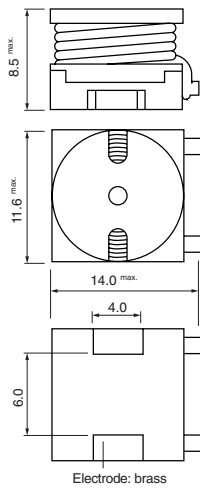
●Operating temperature range: -20 to +105°C (Including self-temperature rise)



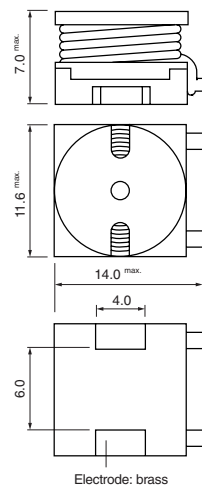
- All specifications in this catalog and production status of products are subject to change without notice. Prior to the purchase, please contact NEC TOKIN for updated product data.
- Please request for a specification sheet for detailed product data prior to the purchase.
- Before using the product in this catalog, please read "Precautions" and other safety precautions listed in the printed version catalog.

Shape and Dimensions

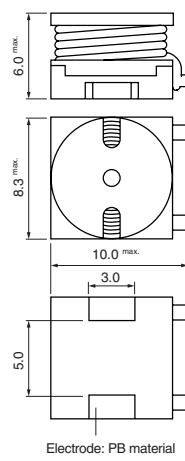
●SSB 15Series



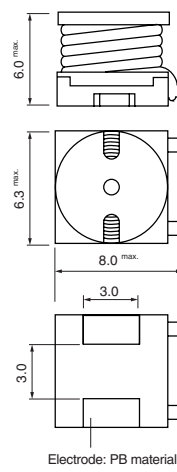
●SSB 14Series



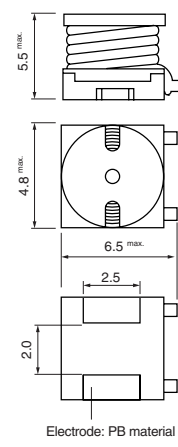
●SSB 84Series



●SSB 64Series



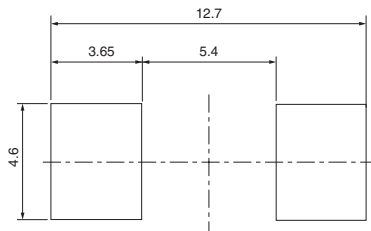
●SSB 44Series



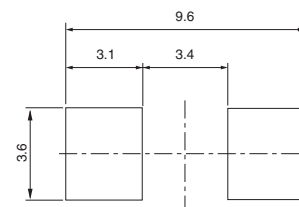
[mm]

Recommended Land Pattern

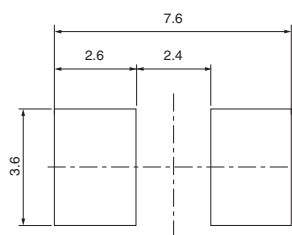
●SSB 14/15Series



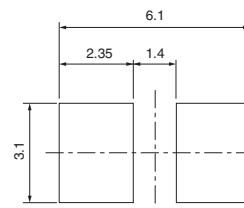
●SSB 84Series



●SSB 64Series



●SSB 44Series



[mm]



- All specifications in this catalog and production status of products are subject to change without notice. Prior to the purchase, please contact NEC TOKIN for updated product data.
- Please request for a specification sheet for detailed product data prior to the purchase.
- Before using the product in this catalog, please read "Precautions" and other safety precautions listed in the printed version catalog.

Numbering System

SSB - 44 - 101

① ② ③

- ① Series
- ② Core size (indicated by the first numbers of the core's diameter and height.)

**Model and core size**

The Models use 5-digit numbers that show the core size and inductance.

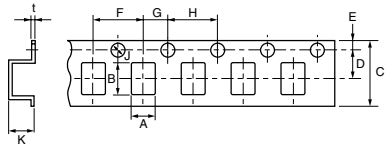
The first two digits show the core size, indicated by the first numbers of the core's diameter and height.

Model	Core size [mm]
SSB 15-□□□	φ11.0×5.5
SSB 14-□□□	φ11.0×4.0
SSB 84-□□□	φ8.0×4.0
SSB 64-□□□	φ6.0×4.0
SSB 44-□□□	φ4.5×4.0

③ Inductance:  $10 \times 10^1 = 100$  ( $\mu\text{H}$ )

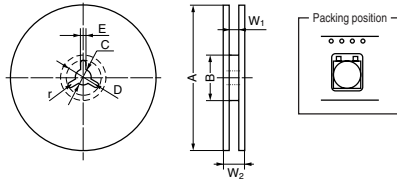
SSB14, 15 Series (500pcs./reel)

Dimensions of indented square hole plastic tape



A	B	C	D	E	F	G	H	J	K	t
± 0.1	± 0.1	± 0.3	± 0.1	± 0.1	± 0.1	± 0.1	± 0.1	+0.1, -0	SSB14: 6.5 ± 0.1	± 0.05
11.7	14	24	11.5	1.75	16	2.0	4.0	φ1.5	SSB15: 8.0 ± 0.1	0.4

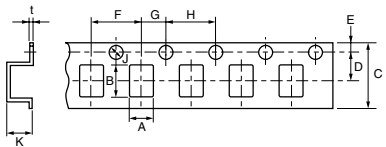
Reel dimensions



A	B	C	D	E	r	W <sub>1</sub>	W <sub>2</sub>
± 2.0	± 5.0	± 0.5	± 1.0	± 0.5		± 0.1	± 0.3
380	80	13	21	2.0	R1.0	12.5	15.5

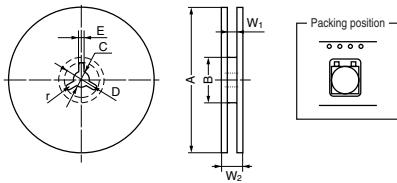
SSB84 Series (1000pcs./reel)

Dimensions of indented square hole plastic tape



A	B	C	D	E	F	G	H	J	K	t
± 0.1	± 0.1	± 0.3	± 0.1	± 0.1	± 0.1	± 0.1	± 0.1	+0.1, -0	± 0.1	± 0.05
8.7	10.4	16	7.5	1.75	12	2.0	4.0	φ1.5	6.0	0.4

Reel dimensions



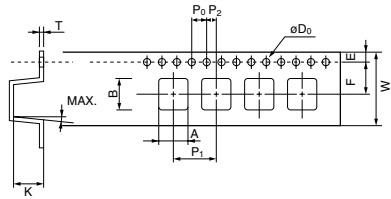
A	B	C	D	E	r	W <sub>1</sub>	W <sub>2</sub>
± 2.0	± 5.0	± 0.5	± 1.0	± 0.5		± 0.1	± 0.3
380	80	13	21	2.0	R1.0	16.5	19.5



- All specifications in this catalog and production status of products are subject to change without notice. Prior to the purchase, please contact NEC TOKIN for updated product data.
- Please request for a specification sheet for detailed product data prior to the purchase.
- Before using the product in this catalog, please read "Precautions" and other safety precautions listed in the printed version catalog.

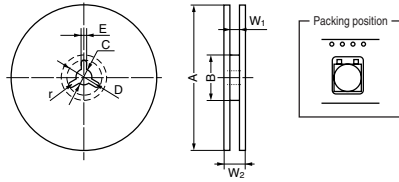
**SSB64 Series (1000pcs./reel)**

**Dimensions of indented square hole plastic tape**



											[mm]
A	B	C	D	E	F	G	H	J	K	t	
± 0.1	± 0.1	± 0.3	± 0.1	± 0.1	± 0.1	± 0.1	± 0.1	+0.1,-0	± 0.1	± 0.05	
6.7	8.4	16	7.5	1.75	12	2.0	4.0	∅1.5	5.9	0.4	

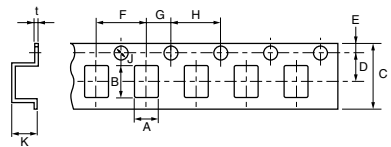
**Reel dimensions**



								[mm]
A	B	C	D	E	r	W <sub>1</sub>	W <sub>2</sub>	
±2.0	±5.0	±0.5	±1.0	±0.5		±0.1	±0.3	
380	80	13	21	2.0	R1.0	16.5	19.5	

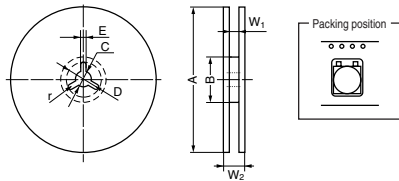
**SSB44 Series (2000pcs./reel)**

**Dimensions of indented square hole plastic tape**



											[mm]
A	B	C	D	E	F	G	H	J	K	t	
± 0.1	± 0.1	± 0.3	± 0.1	± 0.1	± 0.1	± 0.05	± 0.1	+0.1,-0	± 0.1	± 0.05	
4.8	6.0	12	5.5	1.75	8.0	2.0	4.0	∅1.5	5.4	0.4	

**Reel dimensions**



								[mm]
A	B	C	D	E	r	W <sub>1</sub>	W <sub>2</sub>	
±2.0	±5.0	±0.5	±1.0	±0.5		±0.1	±0.3	
380	80	13	21	2.0	R1.0	12.5	15.5	



- All specifications in this catalog and production status of products are subject to change without notice. Prior to the purchase, please contact NEC TOKIN for updated product data.
- Please request for a specification sheet for detailed product data prior to the purchase.
- Before using the product in this catalog, please read "Precautions" and other safety precautions listed in the printed version catalog.