



## SDO5040 SERIES ~ SMD Power Inductors



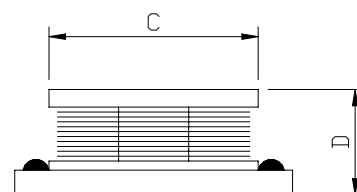
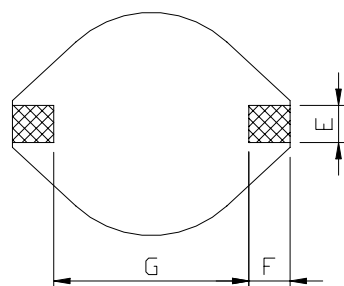
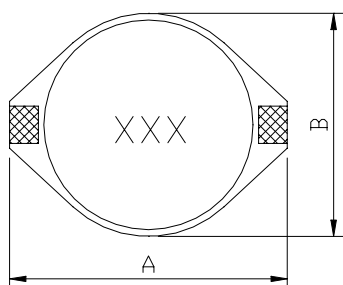
RoHS Compliant

### PART NUMBERING SYSTEM

<b>SDO</b>	<b>5040</b>	—	<b>100M</b>	—	<b>LF</b>
TYPE	DIMENSIONS		INDUCTANCE		LEAD FREE

### SHAPES AND DIMENSIONS

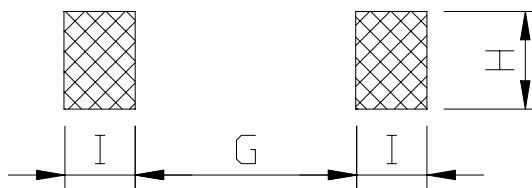
UNIT : mm



**A=18.54 Max. B=15.24 Max. C=12.70 Dia. D=11.43 Max. E=2.54 F=2.54 G=12.7**

### RECOMMENDED PATTERNS

UNIT : mm



**G=12.7 H=2.79 I=2.92**

### FEATURES

- Designed for **high-current, low-voltage DC-DC converters**
- **Saturation current ratings** as high as **33.4 A**
- Inductance values **2.8 μH to 1.4 mH**
- **Exceptionally low DCR**
- **RoHS-compliant.** 260°C compatible. Tin-silver over copper terminations.
- 
-



## SDO5040 SERIES – High Current Power Inductors



RoHS Compliant

### SPECIFICATION TABLE

PART NUMBER	INDUCTANCE ( $\mu$ H)	DCR (m $\Omega$ ) (Max.)	Isat ( A ) (Max.)	Irms ( A ) (Max.)	SRF(MHz) (Ref.)
SDO5040-2R8M-LF	2.8 $\pm$ 20%	5.2	33.4	12.1	65
SDO5040-3R9M-LF	3.9 $\pm$ 20%	6.0	26.8	11.2	40
SDO5040-6R8M-LF	6.8 $\pm$ 20%	9.0	22.5	9.6	30
SDO5040-100M-LF	10 $\pm$ 20%	11	17.8	8.6	22
SDO5040-120M-LF	12 $\pm$ 20%	13	15.9	7.4	21
SDO5040-150M-LF	15 $\pm$ 20%	20	13.8	6.5	18
SDO5040-180M-LF	18 $\pm$ 20%	22	13.2	6.0	14
SDO5040-220M-LF	22 $\pm$ 20%	24	11.8	5.7	13
SDO5040-330M-LF	33 $\pm$ 20%	37	9.6	4.5	10
SDO5040-470M-LF	47 $\pm$ 20%	52	7.8	3.7	8.0
SDO5040-680M-LF	68 $\pm$ 20%	67	6.7	3.4	7.0
SDO5040-101M-LF	100 $\pm$ 20%	115	5.6	2.8	6.0
SDO5040-331M-LF	330 $\pm$ 20%	325	3.0	1.5	3.0
SDO5040-681M-LF	680 $\pm$ 20%	780	2.0	1.1	1.6
SDO5040-142M-LF	1400 $\pm$ 20%	1300	1.5	0.7	1.0

- Inductors tolerance M= $\pm$ 20%.
- Inductance measured at 100 kHz, 0.1 Vrms, 0 Adc .
- DC current at which the inductance drops 10% (typ) from its value without current.
- Operating temperature range -40 $^{\circ}$ C to +85 $^{\circ}$ C.
- Electrical specifications at 25 $^{\circ}$ C.
- Packing : 13" reel, machine-ready ,embossed plastic tape ( 160 parts per full reel).

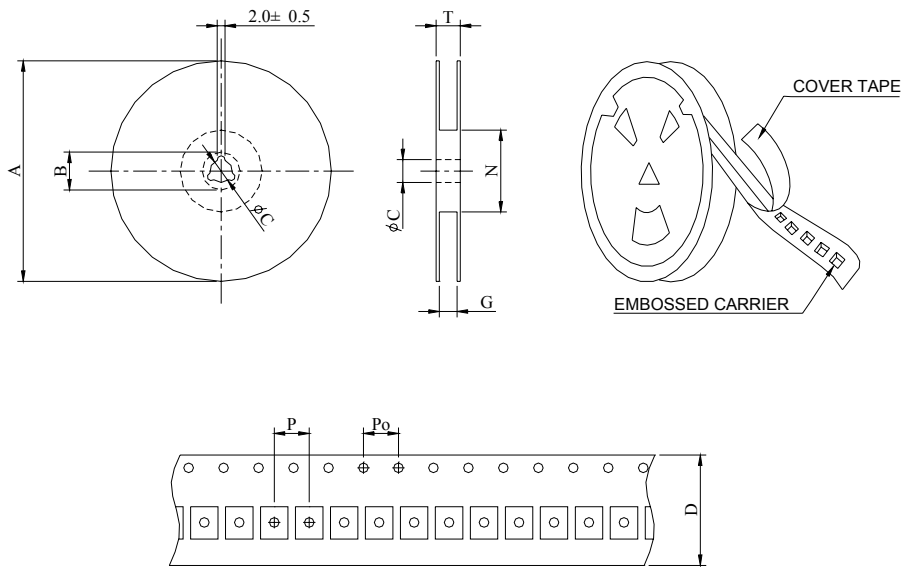


# SDO5040 SERIES – High Current Power Inductors



## PACKAGING SPECIFICATION

RoHS Compliant



SERIES	STAYLE	Q' TY (PCS)	DIMENSIONS (m/m)								
			A	B±0.8	C±0.5	D	G <sup>+0</sup>	N <sup>0</sup>	P	Po	T
SDO5040	13-32	175	330	21	13	32	34	100	20	4	38.4